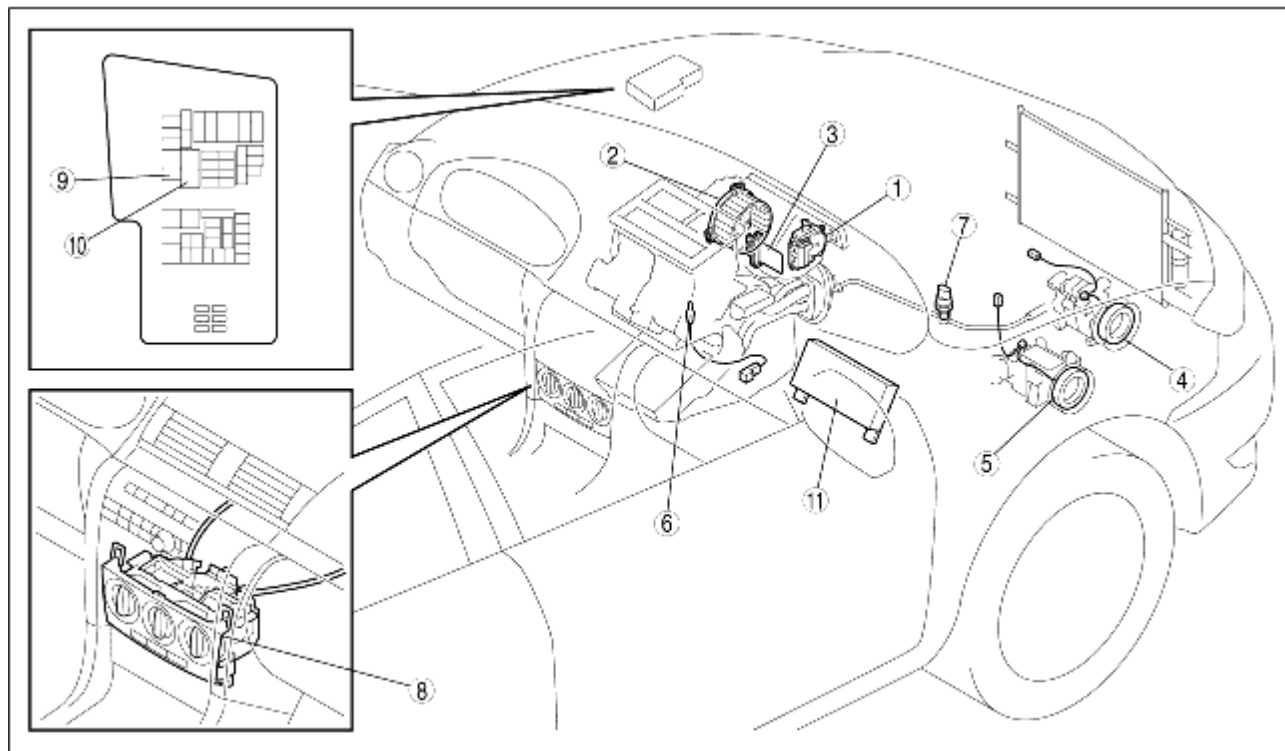


## HVAC CONTROL SYSTEM LOCATION INDEX [MANUAL AIR CONDITIONER]

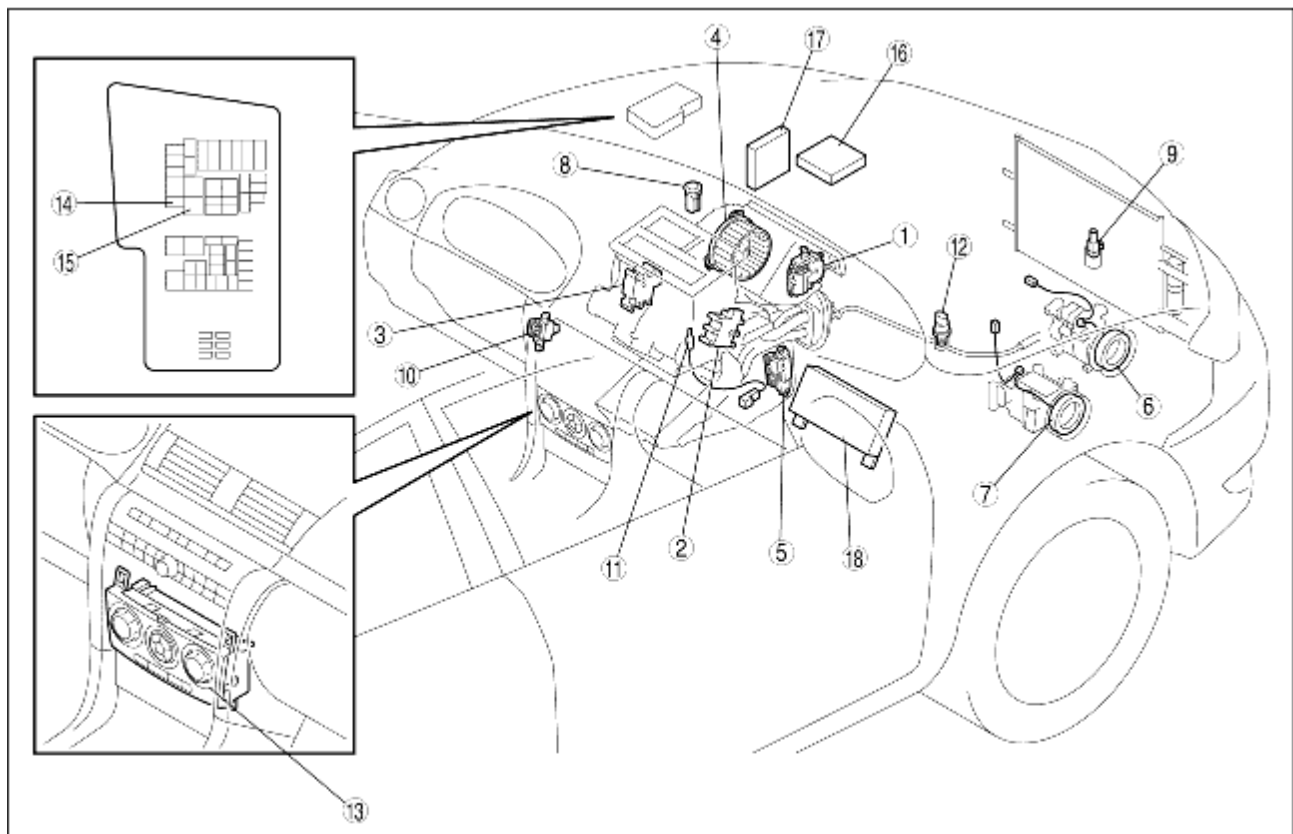
B3E074001042W02

L.H.D.



B3E07401W002

R.H.D.



B3E0740W001

1	Air intake actuator (See <a href="#">AIR INTAKE ACTUATOR REMOVAL/INSTALLATION.</a> ) (See <a href="#">AIR INTAKE ACTUATOR INSPECTION.</a> )
2	Blower motor (See <a href="#">BLOWER MOTOR REMOVAL.</a> ) (See <a href="#">BLOWER MOTOR INSTALLATION.</a> ) (See <a href="#">BLOWER MOTOR INSPECTION.</a> )
3	Resistor (See <a href="#">RESISTOR REMOVAL/INSTALLATION.</a> ) (See <a href="#">RESISTOR INSPECTION.</a> )
4	Magnetic clutch (Z6, ZJ) (See <a href="#">MAGNETIC CLUTCH DISASSEMBLY/ASSEMBLY [Z6, ZJ].</a> ) (See <a href="#">MAGNETIC CLUTCH ADJUSTMENT.</a> ) (See <a href="#">MAGNETIC CLUTCH INSPECTION [Z6, ZJ].</a> )
5	Magnetic clutch (LF) (See <a href="#">MAGNETIC CLUTCH DISASSEMBLY/ASSEMBLY [LF].</a> ) (See <a href="#">MAGNETIC CLUTCH ADJUSTMENT.</a> ) (See <a href="#">MAGNETIC CLUTCH INSPECTION [LF].</a> )
6	Evaporator temperature sensor (See <a href="#">EVAPORATOR TEMPERATURE SENSOR REMOVAL/INSTALLATION.</a> ) (See <a href="#">EVAPORATOR TEMPERATURE SENSOR INSPECTION.</a> )
7	Refrigerant pressure switch (See <a href="#">REFRIGERANT PRESSURE SWITCH REMOVAL/INSTALLATION.</a> ) (See <a href="#">REFRIGERANT PRESSURE SWITCH INSPECTION.</a> )
8	Climate control unit (See <a href="#">CLIMATE CONTROL UNIT REMOVAL [MANUAL AIR CONDITIONER].</a> ) (See <a href="#">CLIMATE CONTROL UNIT INSTALLATION [MANUAL AIR CONDITIONER].</a> ) (See <a href="#">CLIMATE CONTROL UNIT DISASSEMBLY/ASSEMBLY [MANUAL AIR CONDITIONER].</a> ) (See <a href="#">CLIMATE CONTROL UNIT INSPECTION [MANUAL AIR CONDITIONER].</a> )

9	A/C relay (See <a href="#">RELAY INSPECTION.</a> )
10	Blower relay (See <a href="#">RELAY INSPECTION.</a> )
11	PJB (See <a href="#">PASSENGER JUNCTION BOX (PJB) REMOVAL/INSTALLATION.</a> ) (See <a href="#">PASSENGER JUNCTION BOX (PJB) INSPECTION.</a> )